

Dual-channel On-line Conductivity Analyzer MARK-602ld

MARK-602ld is a dual-channel analyzer for continuous in-line measurements of conductivity (absolute and reduced to 25°C), salinity and temperature for water and aqueous solutions, including deionized and ultrapure water applications.

Features

- Calibrated to National standard with a certificate of calibration
- Two channels for independent measurements in two points
- In-line mounting for process control
- Suitable for ultrapure water measurements
- Dual automatic temperature compensation, selectable linear coefficient of compensation
- Stainless steel flow-dip probe requires no calibration
- Programmable ranges of measurements for each channel
- Programmable setpoints for each channel
- Two isolated current outputs 0-5/4-20/0-20mA
- RS-485 port
- Probe cable length up to 100 m
- Backlit graphic LCD with adjustment of illumination. Easy input of all parameters by keypad
- User selectable security code to protect settings and configuration
- Resistance to industrial interferences
- Alarm relay



Order scheme

Dual-channel In-line Conductivity Analyzer

	MARK-602LD-																			
Conductivity cell:	one CS-003LD (0,000 ... 200 μS/sm, k=0,03cm ⁻¹)	0																		
	two CS-003LD	1																		
Probe-to-analyzer cable (up to 100m*):	total length for first channel, m																			
	total length for second channel, m																			
Type of installation kit for first channel:	flow-through																			
	in-line																			
Type of installation kit for second channel:	flow-through																			
	in-line																			
Hydraulic panel:	no																			
	for one channel																			
	for two channels																			
Mounting:	wall (IP65)																			
	panel (IP30)																			
Power supply:	220V																			
	36V																			

* Default length is 5m. For the 100m length please use symbols "00".

Specification

	Measuring range	Cell constant	Resolution	Accuracy
Conductivity, $\mu\text{S/cm}$	0,000 ... 200	0,03 cm^{-1}	0,0001	$\pm(0,001 + 2\% \text{ of value})$
Salinity, mg/L	0 ... 100		0,0001	$\pm(0,001 + 2,5\% \text{ of value})$
Temperature, $^{\circ}\text{C}$	5 ... 50**		0,1	$\pm 0,3$

Ambient pressure:up to 10 bar

Dimensions of analyzer only:

wall mounting.....266*170*95 mm

panel mounting.....252*146*100 mm

sensor..... $\varnothing 54*130$ mm

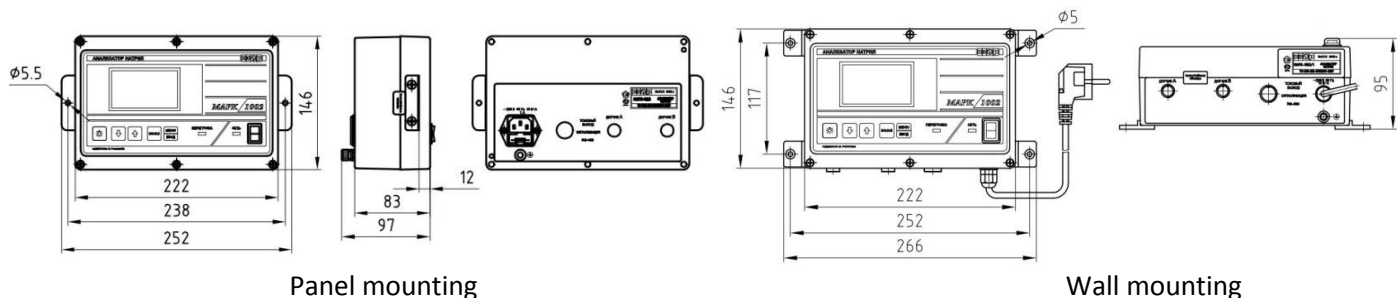
Weight of instrument only:2,6 kg

Power supply:.....220 V or 36V, 50Hz/ 10 VA

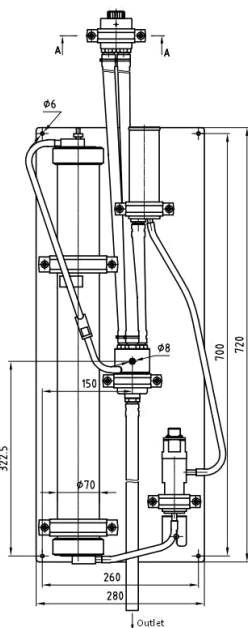
**automatic temperature compensation range

- ☆ Traceable to National standard
- ☆ Included into Russian Federation State Register of approved measuring instruments
- ☆ Has the License of Russian Federation Federal Inspectorate of ecologic, technical and nuclear for use in power plants applications
- ☆ Certificated to electromagnetic compatibility
- ☆ Warranty 12 months

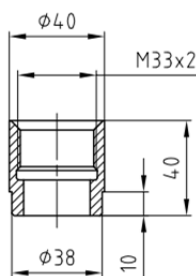
Dimensions of the block, mm:



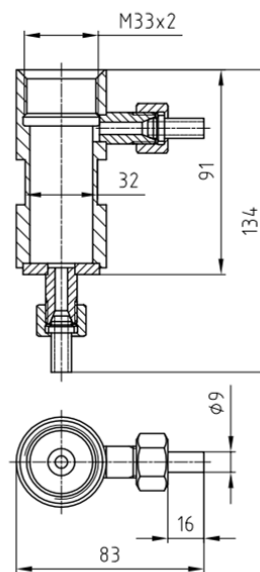
Dimensions of the hydraulic panel, mm:



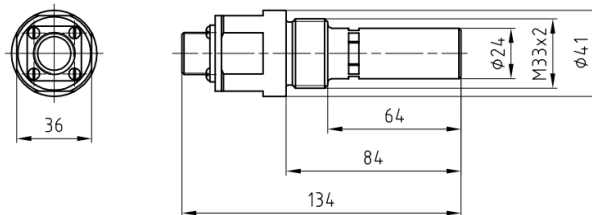
Dimensions of the in-line mounting bushing, mm:



Dimensions of the flow-through chamber, mm:



Dimensions of the conductivity probe, mm:



Specification subjects to change without notice.

August 2012